

## 5.3 T859 PA PCB

This section contains the following information.

IPN	Section	Page
<b>220-01159-01</b>	Parts List	5.3.3
	Mechanical & Miscellaneous Parts	5.3.7
	Grid Reference Index	5.3.9
	PCB Layout - Bottom Side	5.3.11
	PCB Layout - Top Side	5.3.12
	RF Section Circuit Diagram	5.3.13
	Control Section Circuit Diagram	5.3.14



## T859 Parts List (IPN 220-01159-01)

### How To Use This Parts List

The components listed in this parts list are divided into two main types: those with a circuit reference (e.g. C2, D1, R121, etc) and those without (miscellaneous and mechanical).

Those with a circuit reference are grouped in alphabetical order and then in numerical order within each group. Each component entry comprises three or four columns: the circuit reference, variant (if applicable), IPN and description. A number in the variant column indicates that this is a variant component which is fitted only to the product type listed.

The miscellaneous and mechanical section lists the variant and common parts in IPN order.

### Parts List Amendments

R96 Changed from 10K (036-15100-00) to 4K7. To raise limits of reverse power alarm switching point (3/10/89).  
 C23 (Hi Band) changed from 47p (029-02470-02) to 39p. To accommodate power variations across the band (89/10-547)  
 C27,C43 & C47 (Hi Band) changed from 33p (029-02330-02) to 27p. To accommodate power variations across the band (89/10-547)  
 L18, L35 & L38 Changed from coil 1.5T/8.0mm (052-08180-15) to Inductor Hairpin 10mm Tall (89/10-566).  
 L27 & L31 Changed from coil 1.5T/6.0mm (052-08160-15) to 2.5T/6.0mm (89/10-566).  
 R98 Changed from 1K (036-14100-00) to 3K9. To provide adequate setting margin for forward power alarm (89/11-581).  
 C22 (Low Band) changed from 100p (015-03100-02) to 33p. To eliminate instability & improve power out (90/01-023).  
 C22 (Mid & Hi Bands) changed from 100p (015-03100-02) to 22p. To eliminate instability & improve power out (90/01-023).  
 C23 (Low Band) changed from 47p (029-02470-02) to 27p. To eliminate instability & improve power out (90/01-023).  
 C23 (Mid & Hi Bands) changed from 39p (029-02390-02) to 18p. To eliminate instability & improve power out (90/01-023).  
 C24 (Low Band) changed from 39p (029-02390-02) to 22p. To eliminate instability & improve power out (90/01-023).  
 C24 (Mid Band) changed from 39p (029-02390-02) to 18p. To eliminate instability & improve power out (90/01-023).  
 C24 (Hi Band) changed from 33p (029-02330-02) to 18p. To eliminate instability & improve power out (90/01-023).  
 C28 & C49 (Mid & Hi Bands) changed from 33p (029-02330-02) to 27p. To eliminate instability & improve power out (90/01-023).  
 C69 10u added. To eliminate instability & improve power out (90/01-023).  
 C70A 100n added. To eliminate instability & improve power out (90/01-023).  
 C130 & C131 150p added. To eliminate instability & improve power out (90/01-023).  
 L21 Changed from coil 1.5T/6.0mm (052-08160-15) to 2.5T/6.0mm (90/01-023).  
 IC4 LM317L added. To eliminate instability & improve power out (90/01-023).  
 R34 & R35 (Low & Mid Bands) 180e added across base & emitter of Q6. To eliminate instability & improve pwr out (90/01-023).  
 R37 1K added. To eliminate instability & improve power out (90/01-023).  
 R69 10e added. To eliminate instability & improve power out (90/01-023).  
 R70 220e added. To eliminate instability & improve power out (90/01-023).  
 R11 (Hi Band) changed from 10e (032-32100-00) to 22e. To improve power output from driver stages (90/06-240).  
 C11 & C12 (Hi Band) 10p added across base & emitters of Q3. To ensure adequate drive pwr on hi band versions (90/08-390).  
 R7 (Hi Band) changed from 33e (030-02330-20) to 68e. To ensure adequate drive pwr on hi band versions (90/08-390).  
 R82 & R84 Changed from 4K7 (036-14470-00) to 2K2. To ensure proper operation of alarm circuits (92/07-501).  
 C80 & C86 150p deleted. To prevent 800kHz instability (93/03-155).  
 C102 150p deleted. To prevent 800kHz instability of Q15 & Q16 (95/08-7040 & 96/08-7113).  
 C27, C28, C42, C43, C47 & C49 Changed from mica case type to ceramic chip type. All values remain the same. To eliminate 3MHz & 90 MHz instabilities (95/08-7040 & 96/07-7106)).

Ref	Var	IPN	Description	Ref	Var	IPN	Description
BRKT		012-04100-05	CAP F/THRU 1N SUPPR FLTR STUD MTG	*C22	LOW	029-02330-02	CAP MICA 5MM CASE 33P 5%
				*C22	MID	029-02220-02	CAP MICA 5MM CASE 22P 5%
CV1		028-02100-06	CAP TRIM 3/10P NPO TOP ADJ BLUE MUR TZ	*C22	HI	029-02220-02	CAP MICA 5MM CASE 22P 5%
C2		015-02270-02	CAP CER HIQ 1210 CHIP 27P 5% NPO 200V	*C23	LOW	029-02270-02	CAP MICA 5MM CASE 27P 5%
C3		015-02270-02	CAP CER HIQ 1210 CHIP 27P 5% NPO 200V	*C23	MID	029-02180-02	CAP MICA 5MM CASE 18P 5%
C6		015-03100-02	CAP CER HIQ 1210 CHIP 100P 5% NPO 200V	*C23	HI	029-02180-02	CAP MICA 5MM CASE 18P 5%
C7		015-02220-02	CAP CER HIQ 1210 CHIP 22P 5% NPO 200V	*C24	LOW	029-02220-02	CAP MICA 5MM CASE 22P 5%
CV8		028-02200-01	CAP TRIM 4/20P N750 TOP ADJ RED MUR TZ	*C24	MID	029-02180-02	CAP MICA 5MM CASE 18P 5%
*C11	LOW		NOT FITTED	*C24	HI	029-02180-02	CAP MICA 5MM CASE 18P 5%
*C11	MID		NOT FITTED	*C27	LOW	029-02330-02	CAP MICA 5MM CASE 33P 5%
*C11	HI	015-02100-02	CAP CER HIQ 1210 CHIP 10P 5% NPO 200V	*C27	MID	029-02330-02	CAP MICA 5MM CASE 33P 5%
*C12	LOW		NOT FITTED	*C27	HI	029-02270-02	CAP MICA 5MM CASE 27P 5%
*C12	MID		NOT FITTED	*C28	LOW	029-02330-02	CAP MICA 5MM CASE 33P 5%
*C12	HI	015-02100-02	CAP CER HIQ 1210 CHIP 10P 5% NPO 200V	*C28	MID	029-02270-02	CAP MICA 5MM CASE 27P 5%
C15		015-03100-02	CAP CER HIQ 1210 CHIP 100P 5% NPO 200V	*C28	HI	029-02270-02	CAP MICA 5MM CASE 27P 5%
C16		015-24470-08	CAP CER 0805 CHIP 4N7 10% X7R 50V	C29		029-03100-02	CAP MICA 5MM CASE 100P 5%
C17		020-07470-04	CAP ELECT RADL 4M7 25V 20% 8X13MM SOLID	CV32		028-02100-03	CAP TRIM 2/10P JOHNSON 187-0106-175
C18		015-24470-08	CAP CER 0805 CHIP 4N7 10% X7R 50V	*C33	LOW	015-01560-02	CAP CER HIQ 1210 CHIP 5P6 5% NPO 200V
C19		020-07470-04	CAP ELECT RADL 4M7 25V 20% 8X13MM SOLID	*C33	MID		NOT FITTED
C20		015-03100-02	CAP CER HIQ 1210 CHIP 100P 5% NPO 200V	*C33	HI		NOT FITTED

Ref	Var	IPN	Description	Ref	Var	IPN	Description
CV34		028-02100-03	CAP TRIM 2/10P JOHNSON 187-0106-175	C125		015-23150-01	CAP CER 0805 CHIP 150P 5% NPO 50V
CV35		028-02100-03	CAP TRIM 2/10P JOHNSON 187-0106-175	C126		015-23150-01	CAP CER 0805 CHIP 150P 5% NPO 50V
*C36	LOW	029-02390-02	CAP MICA 5MM CASE 39P 5%	C127		015-23150-01	CAP CER 0805 CHIP 150P 5% NPO 50V
*C36	MID	029-02390-02	CAP MICA 5MM CASE 33P 5%	C128		015-23150-01	CAP CER 0805 CHIP 150P 5% NPO 50V
*C36	HI	029-02270-02	CAP MICA 5MM CASE 27P 5%	C129		015-23150-01	CAP CER 0805 CHIP 150P 5% NPO 50V
C37		029-02330-02	CAP MICA 5MM CASE 33P 5%	C130		015-23150-01	CAP CER 0805 CHIP 150P 5% NPO 50V
*C40	LOW	029-02390-02	CAP MICA 5MM CASE 39P 5%	C131		015-23150-01	CAP CER 0805 CHIP 150P 5% NPO 50V
*C40	MID	029-02330-02	CAP MICA 5MM CASE 33P 5%				
*C40	HI	029-02270-02	CAP MICA 5MM CASE 27P 5%	D1		001-00013-45	(S) DIODE SCHOTTKY 1SS97/2
C41		029-02330-02	CAP MICA 5MM CASE 33P 5%	D2		001-00013-45	(S) DIODE SCHOTTKY 1SS97/2
*C42	LOW	029-02330-02	CAP MICA 5MM CASE 33P 5%	D3		001-00011-60	(S) DIODE SR2607 6A/30V
*C42	MID	029-02330-02	CAP MICA 5MM CASE 33P 5%	D5		008-00013-32	(S) LED 3MM RED LO CURRENT NO MTG
*C42	HI	029-02270-02	CAP MICA 5MM CASE 27P 5%	D6		001-10000-70	(S) DIODE SMD BAV70 DUAL SW SOT-23 COM CA
*C43	LOW	029-02330-02	CAP MICA 5MM CASE 33P 5%	D10		008-00013-35	(S) LED 3MM GREEN LO CURRENT NO MTG
*C43	MID	029-02270-02	CAP MICA 5MM CASE 27P 5%	D11		008-00013-32	(S) LED 3MM RED LO CURRENT NO MTG
*C43	HI	029-02270-02	CAP MICA 5MM CASE 27P 5%	D13		001-10000-70	(S) DIODE SMD BAV70 DUAL SWSOT-23 COM CA
C45		015-03100-02	CAP CER HIQ 1210 CHIP 100P 5% NPO 200V	D17		001-10000-70	(S) DIODE SMD BAV70 DUAL SW SOT-23 COM CA
C46		015-03100-02	CAP CER HIQ 1210 CHIP 100P 5% NPO 200V				
*C47	LOW	029-02330-02	CAP MICA 5MM CASE 33P 5%	IC1		002-10003-24	(S) IC SMD 324 QUAD OP AMP SO14
*C47	MID	029-02330-02	CAP MICA 5MM CASE 33P 5%	IC2		002-00014-62	(S) IC 317L 100MA REG 3 TERMINAL TO-92
*C47	HI	029-02270-02	CAP MICA 5MM CASE 27P 5%	IC3		002-10003-24	(S) IC SMD 324 QUAD OP AMP SO14
*C49	LOW	029-02330-02	CAP MICA 5MM CASE 33P 5%	IC4		002-00014-62	(S) IC 317L 100MA REG 3 TERMINAL TO-92
*C49	MID	029-02270-02	CAP MICA 5MM CASE 27P 5%				
*C49	HI	029-02270-02	CAP MICA 5MM CASE 27P 5%	L1		052-08330-10	COIL A/W 1T/3.0MM SMD 0.8MM WIRE
C50		029-03100-02	CAP MICA 5MM CASE 100P 5%	L2		052-08160-25	COIL A/W 2.5T/6.0MM HOR 0.8MM WIRE
CV51		028-02100-03	CAP TRIM 2/10P JOHNSON 187-0106-175	L3		065-00010-04	BEAD FERRITE F8 4X2X5MM
*C52	LOW	015-01560-02	CAP CER HIQ 1210 CHIP 5P6 5% NPO 200V	L5		065-00010-04	BEAD FERRITE F8 4X2X5MM
*C52	MID		NOT FITTED	L6		052-08160-25	COIL A/W 2.5T/6.0MM HOR 0.8MM WIRE
*C52	HI		NOT FITTED	L7		052-08160-25	COIL A/W 2.5T/6.0MM HOR 0.8MM WIRE
C54		015-24470-08	CAP CER 0805 CHIP 4N7 10% X7R 50V	L8		065-00010-04	BEAD FERRITE F8 4X2X5MM
C55		020-07470-04	CAP ELECT RADL 4M7 25V 20% 8X13MM SOLID	L11		065-00010-04	BEAD FERRITE F8 4X2X5MM
C56		029-03100-02	CAP MICA 5MM CASE 100P 5%	L12		065-00010-04	BEAD FERRITE F8 4X2X5MM
CV57		028-02100-03	CAP TRIM 2/10P JOHNSON 187-0106-175	L13		052-08160-15	COIL A/W 1.5T/7.0MM HOR 0.8MM WIRE
*C58	LOW	015-01560-02	CAP CER HIQ 1210 CHIP 5P6 5% NPO 200V	L14		051-00005-45	COIL IND 18MM FORMED COPPER STRIP
*C58	MID		NOT FITTED	L15		051-00005-45	COIL IND 18MM FORMED COPPER STRIP
*C58	HI		NOT FITTED	L16		065-00010-04	BEAD FERRITE F8 4X2X5MM
C60		015-23150-01	CAP CER 0805 CHIP 150P 5% NPO 50V	L17		065-00010-04	BEAD FERRITE F8 4X2X5MM
C61		015-24470-08	CAP CER 0805 CHIP 4N7 10% X7R 50V	L18		051-00005-60	IND HAIRPIN 10MM TALL T859
*C62	LOW	015-01390-02	CAP CER HIQ 1210 CHIP 3P9 5% NPO 200V	L19		051-00005-39	COUPLER WIRELINE TAIT COIL DWG NO 539
*C62	MID	015-01330-02	CAP CER HIQ 1210 CHIP 3P3 5% NPO 200V	L20		052-08340-20	COIL A/W 2T/4.0MM SMD 0.8MM WIRE
*C62	HI	015-01330-02	CAP CER HIQ 1210 CHIP 3P3 5% NPO 200V	L21		052-08160-25	COIL A/W 2.5T/6.0MM HOR 0.8MM WIRE
*C63	LOW	029-02120-01	CAP MICA 10MM CASE 12P 5%	L22		065-00010-04	BEAD FERRITE F8 4X2X5MM
*C63	MID	029-02100-01	CAP MICA 10MM CASE 10P 10%	L23		051-00005-45	COIL IND 18MM FORMED COPPER STRIP
*C63	HI	029-02100-01	CAP MICA 10MM CASE 10P 10%	L24		052-08340-20	COIL A/W 2T/4.0MM SMD 0.8MM WIRE
*C65	LOW	029-02120-01	CAP MICA 10MM CASE 12P 5%	L25		052-08130-15	COIL A/W 1.5T/3.0MM HOR 0.8MM WIRE
*C65	MID	029-02100-01	CAP MICA 10MM CASE 10P 10%	L26		052-08130-15	COIL A/W 1.5T/3.0MM HOR 0.8MM WIRE
*C65	HI	029-02100-01	CAP MICA 10MM CASE 10P 10%	L27		052-08160-25	COIL A/W 2.5T/6.0MM HOR 0.8MM WIRE
*C66	LOW	029-01560-02	CAP MICA 5MM CASE 5P6 5%	L28		065-00010-04	BEAD FERRITE F8 4X2X5MM
*C66	MID	029-01470-02	CAP MICA 5MM CASE 4P7 5%	L31		052-08160-25	COIL A/W 2.5T/6.0MM HOR 0.8MM WIRE
*C66	HI	029-01470-02	CAP MICA 5MM CASE 4P7 5%	L32		065-00010-04	BEAD FERRITE F8 4X2X5MM
C67		015-21220-01	CAP CER 0805 CHIP 2P2 +/-0.25P NPO 50V	L35		051-00005-60	IND HAIRPIN 10MM TALL T859
C68		015-21220-01	CAP CER 0805 CHIP 2P2 +/-0.25P NPO 50V	L36		065-00010-04	BEAD FERRITE F8 4X2X5MM
C69		025-08100-02	CAP TANT BEAD 10M 10% 16V	L37		065-00010-04	BEAD FERRITE F8 4X2X5MM
*C70	LOW	015-21470-01	CAP CER 0805 CHIP 4P7 +/-0.25P NPO 50V	L38		051-00005-60	IND HAIRPIN 10MM TALL T859
*C70	MID	015-21390-01	CAP CER 0805 CHIP 3P9 +/-0.25P NPO 50V	L39		051-00005-54	COUPLER WIRELINE TAIT COIL DWG NO 554
*C70	HI	015-21390-01	CAP CER 0805 CHIP 3P9 +/-0.25P NPO 50V	L41		056-00021-04	IND FXD 330NH AXIAL
C70A		015-06100-08	CAP CER 1206 CHIP 100N 10% X7R 50V	L42	LOW	052-08340-10	COIL A/W 1T/4.0MM SMD 0.8MM WIRE
C72		015-24470-08	CAP CER 0805 CHIP 4N7 10% X7R 50V	*L42	MID	052-08330-10	COIL A/W 1T/3.0MM SMD 0.8MM WIRE
C73		015-23150-01	CAP CER 0805 CHIP 150P 5% NPO 50V	*L42	HI	052-08330-10	COIL A/W 1T/3.0MM SMD 0.8MM WIRE
C76		015-24470-08	CAP CER 0805 CHIP 4N7 10% X7R 50V	L43		052-08335-10	COIL A/W 1T/3.5MM SMD 0.8MM WIRE
C77		015-23150-01	CAP CER 0805 CHIP 150P 5% NPO 50V	*L45	LOW	052-08345-20	COIL A/W 2T/4.5MM SMD 0.8MM WIRE
C78		015-23150-01	CAP CER 0805 CHIP 150P 5% NPO 50V	*L45	MID	052-08335-20	COIL A/W 2T/3.5MM SMD 0.8MM WIRE
C81		015-23150-01	CAP CER 0805 CHIP 150P 5% NPO 50V	*L45	HI	052-08335-20	COIL A/W 2T/3.5MM SMD 0.8MM WIRE
C84		015-24470-08	CAP CER 0805 CHIP 4N7 10% X7R 50V	*L46	LOW	052-08345-20	COIL A/W 2T/4.5MM SMD 0.8MM WIRE
C85		015-23150-01	CAP CER 0805 CHIP 150P 5% NPO 50V	*L46	MID	052-08340-20	COIL A/W 2T/4.0MM SMD 0.8MM WIRE
C87		015-23150-01	CAP CER 0805 CHIP 150P 5% NPO 50V	*L46	HI	052-08340-20	COIL A/W 2T/4.0MM SMD 0.8MM WIRE
C90		015-06100-08	CAP CER 1206 CHIP 100N 10% X7R 50V	*L47	LOW	052-08340-20	COIL A/W 2T/4.0MM SMD 0.8MM WIRE
C91		025-08100-02	CAP TANT BEAD 10M 10% 16V	*L47	MID	052-08335-20	COIL A/W 2T/3.5MM SMD 0.8MM WIRE
C92		015-25100-08	CAP CER 0805 CHIP 10N 10% X7R 50V	*L47	HI	052-08335-20	COIL A/W 2T/3.5MM SMD 0.8MM WIRE
C93		015-23150-01	CAP CER 0805 CHIP 150P 5% NPO 50V	L49		056-00021-04	IND FXD 330NH AXIAL
C96		015-23150-01	CAP CER 0805 CHIP 150P 5% NPO 50V	L51		056-00021-04	IND FXD 330NH AXIAL
C97		015-23150-01	CAP CER 0805 CHIP 150P 5% NPO 50V	L52		051-00005-53	COIL TAIT NO 553 A/W 10MM LINK T858/9
C98		015-24470-08	CAP CER 0805 CHIP 4N7 10% X7R 50V				
C99		015-23150-01	CAP CER 0805 CHIP 150P 5% NPO 50V	Q1		000-00022-71	(S) XSTR SD1135 NPN STUD MTG UHF PWR 5W
C100		015-23150-01	CAP CER 0805 CHIP 150P 5% NPO 50V	Q3		000-00032-79	(S) XSTR MRF654 UHF PWR 15W STUD
C101		015-25100-08	CAP CER 0805 CHIP 10N 10% X7R 50V	Q4		000-00032-67	(S) XSTR MRF648 UHF PWR 60W 6LFL
C102		015-23150-01	CAP CER 0805 CHIP 150P 5% NPO 50V	Q6		000-00032-67	(S) XSTR MRF648 UHF PWR 60W 6LFL
C103		015-23150-01	CAP CER 0805 CHIP 150P 5% NPO 50V	Q7		000-00032-67	(S) XSTR MRF648 UHF PWR 60W 6LFL
C104		015-24470-08	CAP CER 0805 CHIP 4N7 10% X7R 50V	Q10		000-00020-70	(S) XSTR BS170 JFET TO-92 SMALL SIG
C105		015-23150-01	CAP CER 0805 CHIP 150P 5% NPO 50V	Q11		000-10008-17	(S) XSTR SMD BC817-25 NPN SOT-23 AF LO PWR
C106		015-23150-01	CAP CER 0805 CHIP 150P 5% NPO 50V	Q12		000-00020-70	(S) XSTR BS170 JFET TO-92 SMALL SIG
C108		015-23150-01	CAP CER 0805 CHIP 150P 5% NPO 50V	Q13		000-10008-17	(S) XSTR SMD BC817-25 NPN SOT-23 AF LO PWR
C109		015-23150-01	CAP CER 0805 CHIP 150P 5% NPO 50V	Q15		000-10008-17	(S) XSTR SMD BC817-25 NPN SOT-23 AF LO PWR
C110		015-01680-02	CAP CER HIQ 1210 CHIP 5P6 5% NPO 200V	Q16		000-00030-95	(S) XSTR 2N6107 PNP TO-220 AF PWR
C111		015-01560-02	CAP CER HIQ 1210 CHIP 5P6 5% NPO 200V	Q17		000-10008-57	(S) XSTR SMD BCW70/BC857-215 PNP SOT23 AF
C112		015-01820-06	CAP CER 1210 CHIP 8P2 NPO 500V GRM42-2	Q18		000-00011-70	(S) XSTR BD136 PNP AF PWR TO126
C113		015-01820-06	CAP CER 1210 CHIP 8P2 NPO 500V GRM42-2	Q19		000-10008-57	(S) XSTR SMD BCW70/BC857-215 PNP SOT23 AF
C114		015-23150-01	CAP CER 0805 CHIP 150P 5% NPO 50V	Q20		000-10008-17	(S) XSTR SMD BC817-25 NPN SOT-23 AF LO PWR
C115		015-23150-01	CAP CER 0805 CHIP 150P 5% NPO 50V	Q21		000-10008-17	(S) XSTR SMD BC817-25 NPN SOT-23 AF LO PWR
C116		015-23150-01	CAP CER 0805 CHIP 150P 5% NPO 50V				
C117		015-23150-01	CAP CER 0805 CHIP 150P 5% NPO 50V	R1		030-53470-20	RES FILM AI 470E 5% 0.4W 4X1.6MM
C118		015-23150-01	CAP CER 0805 CHIP 150P 5% NPO 50V	R2		030-02120-20	RES FILM 12E 5% 0.4W 4X1.6MM
C119		015-23150-01	CAP CER 0805 CHIP 150P 5% NPO 50V	R3		030-53470-20	RES FILM AI 470E 5% 0.4W 4X1.6MM
C120		015-23150-01	CAP CER 0805 CHIP 150P 5% NPO 50V	*R7	LOW	030-52330-20	RES FILM AI 33E 5% 0.4W 4X1.6MM
C121		015-23150-01	CAP CER 0805 CHIP 150P 5% NPO 50V	*R7	MID	030-52330-20	RES FILM AI 33E 5% 0.4W 4X1.6MM
C122		015-23150-01	CAP CER 0805 CHIP 150P 5% NPO 50V	*R7	HI	030-52680-20	RES FILM AI 68E 5% 0.4W 4X1.6MM
C123		015-23150-01	CAP CER 0805 CHIP 150P 5% NPO 50V	*R8		032-33100-00	RES M/F PWR 100E 5% 1W 10X4MM
C124		015-23150-01	CAP CER 0805 CHIP 150P 5% NPO 50V	*R11	LOW	032-32100-00	RES M/F PWR 10E 5% 1W 10X4MM

Ref	Var	IPN	Description	Ref	Var	IPN	Description
*R11	MID	032-32100-00	RES M/F PWR 10E 5% 1W 10X4MM				
*R11	HI	032-32220-00	RES M/F PWR 22E 5% 1W 12X4.5MM				
R30		030-53100-20	RES FILM AI 100E 5% 0.4W 4X1.6MM				
R31		030-53100-20	RES FILM AI 100E 5% 0.4W 4X1.6MM				
R32		030-02820-20	RES FILM 82E 5% 0.4W 4X1.6MM				
R33		030-02820-20	RES FILM 82E 5% 0.4W 4X1.6MM				
*R34	LOW	032-33180-01	RES M/F PWR 180E 5% 2.5W 17X5MM				
*R34	MID	032-33180-01	RES M/F PWR 180E 5% 2.5W 17X5MM				
*R34	HI		NOT FITTED				
*R35	LOW	032-33180-01	RES M/F PWR 180E 5% 2.5W 17X5MM				
*R35	MID	032-33180-01	RES M/F PWR 180E 5% 2.5W 17X5MM				
*R35	HI		NOT FITTED				
R36		036-13680-00	RES M/F 0805 CHIP 680E 5%				
R37		036-14100-00	RES M/F 0805 CHIP 1K 5%				
R38		036-17100-00	RES M/F 0805 CHIP 1M 5%				
R42		036-15100-00	RES M/F 0805 CHIP 10K 5%				
RV43		042-05470-09	RES PRESET 50K CERMET 9.5MM SQ FLAT				
R44		036-14470-00	RES M/F 0805 CHIP 4K7 5%				
R47		036-16100-00	RES M/F 0805 CHIP 100K 5%				
RV48		042-04500-08	RES PRESET 5K CERMET 9.5MM SQ FLAT				
R49		036-13680-00	RES M/F 0805 CHIP 680E 5%				
R50		036-13680-00	RES M/F 0805 CHIP 680E 5%				
RV52		042-04500-08	RES PRESET 5K CERMET 9.5MM SQ FLAT				
R55		036-17100-00	RES M/F 0805 CHIP 1M 5%				
R56		036-15100-00	RES M/F 0805 CHIP 10K 5%				
RV57		042-05470-09	RES PRESET 50K CERMET 9.5MM SQ FLAT				
R58		036-14470-00	RES M/F 0805 CHIP 4K7 5%				
R61		036-13220-00	RES M/F 0805 CHIP 220E 5%				
R62		036-14100-00	RES M/F 0805 CHIP 1K 5%				
*RV63	LOW	044-04200-03	RES PRESET MULTITURN 2K 10T PNL MTG				
*RV63	MID	044-04200-03	RES PRESET MULTITURN 2K 10T PNL MTG				
*RV63	HI	044-04200-03	RES PRESET MULTITURN 2K 10T PNL MTG				
R64		036-14470-00	RES M/F 0805 CHIP 4K7 5%				
R67		036-15100-00	RES M/F 0805 CHIP 10K 5%				
R68		036-14470-00	RES M/F 0805 CHIP 4K7 5%				
R69		036-12100-00	RES M/F 0805 CHIP 10E 5%				
RV69		042-04220-02	RES PRESET 2K CERMET 9.5MM SQ FLAT				
R70		036-13220-00	RES M/F 0805 CHIP 220E 5%				
R72		045-04470-01	RES NTC 4K7 20% 5MM DISC				
R73		036-16220-00	RES M/F 0805 CHIP 220K 5%				
RV74		042-05100-10	RES PRESET 10K CERMET 9.5MM SQ FLAT				
R77		036-14220-00	RES M/F 0805 CHIP 2K2 5%				
R78		036-14100-00	RES M/F 0805 CHIP 1K 5%				
R80		036-13100-00	RES M/F 0805 CHIP 100E 5%				
R81		036-14100-00	RES M/F 0805 CHIP 1K 5%				
R82		036-14220-00	RES M/F 0805 CHIP 2K2 5%				
R83		036-14100-00	RES M/F 0805 CHIP 1K 5%				
R84		036-14220-00	RES M/F 0805 CHIP 2K2 5%				
R85		036-14100-00	RES M/F 0805 CHIP 1K 5%				
R86		036-14100-00	RES M/F 0805 CHIP 1K 5%				
R87		036-15100-00	RES M/F 0805 CHIP 10K 5%				
R88		036-15100-00	RES M/F 0805 CHIP 10K 5%				
R89		039-02500-01	DUMMY LOAD 50E 1% 10W TO-220 NIKKOHM				
R90		039-02500-01	DUMMY LOAD 50E 1% 10W TO-220 NIKKOHM				
R91		039-02500-01	DUMMY LOAD 50E 1% 10W TO-220 NIKKOHM				
R92		039-02500-01	DUMMY LOAD 50E 1% 10W TO-220 NIKKOHM				
R93		039-02500-01	DUMMY LOAD 50E 1% 10W TO-220 NIKKOHM				
R94		039-02500-01	DUMMY LOAD 50E 1% 10W TO-220 NIKKOHM				
R95		036-14100-00	RES M/F 0805 CHIP 1K 5%				
R96		036-14470-00	RES M/F 0805 CHIP 4K7 5%				
R97		036-14100-00	RES M/F 0805 CHIP 1K 5%				
R98		036-14390-00	RES M/F 0805 CHIP 3K9 5%				
R99		036-14100-00	RES M/F 0805 CHIP 1K 5%				
R100		036-14100-00	RES M/F 0805 CHIP 1K 5%				
R101		036-12100-00	RES M/F 0805 CHIP 10E 5%				
R102		036-16220-00	RES M/F 0805 CHIP 220K 5%				
R103		036-15330-00	RES M/F 0805 CHIP 33K 5%				
R104		036-15150-00	RES M/F 0805 CHIP 15K 5%				
R105		036-16470-00	RES M/F 0805 CHIP 470K 5%				
R106		036-15150-00	RES M/F 0805 CHIP 15K 5%				
R107		036-14390-00	RES M/F 0805 CHIP 3K9 5%				
R108		036-15100-00	RES M/F 0805 CHIP 10K 5%				
R109		036-14330-00	RES M/F 0805 CHIP 3K3 5%				
R110		036-16100-00	RES M/F 0805 CHIP 100K 5%				
R111		036-16220-00	RES M/F 0805 CHIP 220K 5%				
R112		036-16220-00	RES M/F 0805 CHIP 220K 5%				
R113		036-15270-00	RES M/F 0805 CHIP 27K 5%				
R115		036-16470-00	RES M/F 0805 CHIP 470K 5%				
R116		045-04470-01	RES NTC 4K7 20% 5MM DISC				
R117		036-15150-00	RES M/F 0805 CHIP 15K 5%				
R118		036-14390-00	RES M/F 0805 CHIP 3K9 5%				
R119		036-14820-00	RES M/F 0805 CHIP 8K2 5%				
R120		036-14680-00	RES M/F 0805 CHIP 6K8 5%				
R121		036-14100-00	RES M/F 0805 CHIP 1K 5%				
R122		036-14100-00	RES M/F 0805 CHIP 1K 5%				
R123		036-13470-00	RES M/F 0805 CHIP 470E 5%				
R124		036-13220-00	RES M/F 0805 CHIP 220E 5%				
SK1		240-02100-44	SKT COAX MINI JACK PCB MTG ANGLED				
NOTE:	LOW	= 400-440MHZ					
	MID	= 440-480MHZ					
	HI	= 480-520MHZ					



## T859 Mechanical & Miscellaneous Parts (220-01159-01)

IPN	Description	IPN	Description
012-04150-01	CAP CER F/THRU 1N5 NO LEAD C1-C15 On 15 Way D Range.	303-50005-00	CONTACT A4M2311 SPRING EARTH T858 Solders On To Shield Lid (319-01148-00) x1.
051-00006-02	SOLDER SPRING 1.3MM A4M1877 LED1 x2, LED2 x2, LED3 x2.	306-01010-00	FERRULE A4M948 HANDLE FXD EQUIP For Handle x2.
065-00010-13	BEAD FERRITE 7D 1.9*0.9*3.8MM STACK POLE 15 Way D Range x15.	308-01007-00	HANDLE A4M949 FXD EQUIP
065-00010-20	BEAD FERRITE BALUN 4B1 PHILIPS Placed On 13.8V Cables At D Range End x1.	308-13085-00	HSINK A1M2275 T859 50W PA Diecast Chassis.
200-00010-05	WIRE T/C 0.5MM 10mm Lengths For Ferrite Beads x12.	308-13086-00	HSINK A3M2271 2MM THICK WIRELINE T859 50W PA Wireline Heatsink x4.
201-00030-01	WIRE #1 T/C WIRE 7/0.2MM PVC BROWN Fwd Pwr Alm. 1 x410mm.	316-06378-00	PNL FRT COMPL A3M2316/2 T859
201-00030-02	WIRE T/C 7/0.2MM PVC RED LEDs 1, 2 & 3 x20mm Each. Fan. 1 x350mm.	316-85018-00	PIN A4M1397 COAX CONDUCTOR T316 346 377PA Soldered To N Type Skt x1.
201-00030-03	WIRE T/C 7/0.2MM PVC ORANGE Rev Pwr Met. 1 x235mm.	318-01011-00	RAIL A2M1872 BOTTOM T377 PA Part Of Installation Kit x1.
201-00030-04	WIRE T/C 7/0.2MM PVC YELLOW Reverse Pwr. 1 x325mm.	318-01012-00	RAIL A3M1873 TOP T377 PA Part Of Installation Kit x1.
201-00030-05	WIRE T/C 7/0.2MM PVC GREEN Fwd Pwr Met. 1 x265mm.	319-01147-00	SHIELD A3M2224 WALL T859 PA Goes Around Filter At N Connector End Of Board x1.
201-00030-06	WIRE T/C 7/0.2MM PVC BLUE Tx Key. 1 x410mm.	319-01148-00	SHIELD A3M2225 LID T859 PA Goes On Top Of Shield Wall (319-01148-00) Above x1.
201-00030-07	WIRE T/C 7/0.2MM PVC VIOLET Rev Pwr Alm. 1 x410mm.	319-01152-00	SHIELD A3M2250 F/THRU MTG T857 Attached To D Range Plug x1.
201-00030-09	WIRE T/C 7/0.2MM PVC WHITE Temp Sense. 1 x285mm.	319-30033-00	SPACER A4M1339 UHF PA Q1 x1, Q3 x1.
201-00030-10	WIRE T/C 7/0.2MM PVC BLACK Fwd Pwr. 1 x310mm, LEDs 1, 2 & 3 x25mm Each.	345-00040-06	SCREW M3*8MM PAN POZI ST BZ Part Of Installation Kit x2.
201-00050-12	CABLE AUTO 152 RED 28/0.3MM PVC 13.8v. 1 x290mm, 1 x220mm.	345-00040-09	SCREW M3*6MM CSK POZI TRUNCATED HEAD ST BZ Part Of Installation Kit x4.
201-00050-20	CABLE AUTO 152 BLACK 28/0.3MM PVC Ground. 1 x40mm.	345-00040-16	SCREW M3X20MM PAN POZI ST BZ D Range x2.
206-00010-11	CABLE COAX 50 OHM RG316-U PTFE 190mm SK1/Front Panel x1.	345-00040-20	SCREW M3*8MM BUTTON SKT HD BLACK ZINC PHOS Front Panel x4.
220-01152-00	PCB T858/859 DIRNL COUPLER	349-00020-07	SCREW 4-40 X 5/16 PAN POZI TAPTITE BLACK Top Cover x18, PCB Mounting x12, N Type x4, Q16 x1, Fan Bracket x2, R89 - R94 x1 Ea., Q4, Q6 & Q7 x2 Ea.
220-01159-01	PCB T859 100W PA A1C674	349-00020-35	SCREW TAPTITE M3X16MM PAN POZI BZ Wireline Heatsink x4.
240-00010-55	PLUG 15 WAY D RANGE WIRE WRAP PINS PNL MTG	349-00020-43	SCREW TAPTITE M4X12MM PAN POZI BZ Cable Clamp x2. Torque to 8lb.
240-00100-43	PLUG COAX MINI PIN PLUG CRIMP 1.5D COAX Connects Coax Cable To Sk1 x1.	349-00020-49	SCREW TAPTITE M4X35MM PAN POZI BZ Fan x4. Torque to 10lbs
240-00100-46	PLUG COAX PNL JACK SUHNER 24 SMC50-2-10C Input Drive On Front Panel x1.	352-00010-29	NUT M4 NYLOC HEX For Handle x2.
240-02010-54	SKT 15WAY D RANGE PNL MTG 125 DEG C Part of Installation Kit x1.	352-00010-35	NUT 8-32 UNC HEX RF PWR XSTR MTG Q1 x1, Q3 x1.
240-02100-06	SKT COAX N TYPE PNL MTG OPEN TERMN	353-00010-10	WASHER M3 FLAT 7MM*0.6MM ST BZ Q16 x1.
240-06010-14	CLAMP LATCHING 15 WAY D RANGE Part Of Installation Kit x1.	356-00010-01	TAG SOLDER 3MM SHORT M6132/3.2 Q4,Q6,Q7 x2 Each
240-06010-15	BLOCK LATCHING 15WAY D RANGE For Securing D Range To Rear x2.	356-00010-03	TAG SOLDER 3MM LONG M614/3.2 Loom Restraints x5. D Range Earthing x2.
258-00010-03	FAN 12V 119 X 119 X 25MM TUBE AXIAL Fit To Bottom Of Chassis.	357-00010-44	CLAMP CABLE 3.2MM P CLIP NYLON Assemble Fan Wires To Heatsink x2.
302-05204-00	BRKT A3M2314 F/THRU MTG T859 Fit To Rear Chassis For Electrical Connection Of Fan x1	360-00010-41	BUSH SHORTY BLACK HEYCO B-187-125 For Power Adjustment Hole On Front Panel x1
303-23117-00	COVER COMPL A2M2223/2 A2M2223/1 SIDE		

<b>IPN</b>	<b>Description</b>	<b>IPN</b>	<b>Description</b>
362-00010-07	GASKET SIL INSULATING TO-220 Q16 x1.		
362-00010-13	BUSH INSULATING 1.1MM TOP HAT Q16 x1.		
362-00010-33	GROMMET LED MTG 3MM LO CURRENT LEDS Used To Secure LEDs to Front Panel x3.		
365-00011-53	LABEL WHITE RW2365/1 104*37mm SPECIAL ADHSIVE Item Description On Outside Of Box x1.		
365-00100-20	LABEL WHITE S/A 28X11mm QUIKSTIK RW718/4 Rev No x1, 'Test Report Inside' x1.		
365-01391-01	LABEL 30*10.8mm TAMPERMARK VOID MATT FCC ID x1, Aust DOTC Cert x2, Ser No x1.		
369-00010-14	TIE CABLE NYLON 100*2.6MM For Looms x6.		
399-00010-56	BAG PLASTIC 200*250MM		
400-00020-07	SLEEVING 2MM SIL RUBBER For Solder Tags Used as Loom Restraints. 5 x25mm. For LEDs. 6 x35mm.		
400-00020-30	HEATSHRINK 3MM MTG FAN WIRES.		
410-00010-43	PKG T296 AMPAC REF 73-46		



## T859 Grid Reference Index (IPN 220-01159-01)

### How To Use This Grid Reference Index

The first digit in the PCB layout reference is a "1" or "2", indicating the top or bottom side layout respectively, and the last two characters give the location of the component on that diagram.

The first digit in the circuit diagram reference is the sheet number, and the last two characters give the location of the component on that sheet.

Device	PCB	Circuit	Device	PCB	Circuit	Device	PCB	Circuit	Device	PCB	Circuit
CV1	1:Q9	1-E7	C85	1:V9	2-B4			2-G4			2-A3
C2	1:Q8	1-E7	C86	1:W6	2-G3			2-N6			2-A8
C3	1:R8	1-E7	C87	1:T2	2-E2			2-N5	Q1	1:Q8	1-C7
C6	1:S8	1-B8	C90	1:V7	2-C0			2-F1	Q3	1:Q6	1-A2
C7	1:Q7	1-C8	C91	1:W8	2-M2	IC4	1:V5	2-H1	Q4	1:Q4	1-D2
CV8	1:R7	1-B7	C92	1:U6	2-P2	L1	1:R9	1-E7	Q6	1:K8	1-H5
C15	1:S5	1-B2	C93	1:U6	2-N2	L2	1:P9	1-D7	Q7	1:K4	1-H2
C16	1:S5	1-B3	C96	1:U5	2-K0	L3	1:P9	1-D7	Q10	1:V10	2-B8
C17	1:S6	1-C3	C97	1:J10	1-Q8	L5	1:T8	1-D9	Q11	1:U10	2-C8
C18	1:T3	1-C3	C98	1:K10	1-R8	L6	1:R7	1-C8	Q12	1:V9	2-B5
C19	1:S2	1-D3	C99	1:U6	2-L0	L7	1:P7	1-B7	Q13	1:U9	2-C4
C20	1:S3	1-E3	C100	1:U6	2-N1	L8	1:P8	1-B7	Q15	1:U8	2-Q2
*C22	1:Q5	1-B2	C101	1:V3	2-N0	L11	1:S7	1-A4	Q16	1:T10	2-R2
*C23	1:Q5	1-C2	C102	1:U8	2-Q2	L12	1:S5	1-A3	Q17	1:T5	2-R7
*C24	1:R5	1-C1	C103	1:U8	2-Q1	L13	1:R5	1-A2	Q18	1:T5	2-R8
*C27	1:Q3	1-D2	C104	1:T6	2-R3	L14	1:Q3	1-E2	Q19	1:V4	2-P8
*C28	1:R3	1-E2	C105	1:T9	2-R2	L15	1:K8	1-K5	Q20	1:U5	2-Q7
C29	1:P3	1-E2	C106	1:T8	2-R1	L16	1:S4	1-C3	Q21	1:V4	2-Q5
CV32	1:P2	1-E1	C108	1:T4	2-J8	L17	1:S3	1-D3	R1	1:R10	1-F7
*C33	1:P3	1-F1	C109	1:T4	2-H3	L18	1:R3	1-D2	R2	1:R9	1-F7
CV34	1:M4	1-G2	C110	1:E3	1-N3	L19	1:N6	1-F3	R3	1:R9	1-F7
CV35	1:M8	1-G5	C111	1:N8	1-F5	L20	1:F3	1-M2	R7	1:R9	1-D7
*C36	1:L8	1-G5	C112	1:F3	1-M1	L21	1:P5	1-B2	R8	1:S7	1-C8
C37	1:L8	1-H5	C113	1:D3	1-P1	L22	1:P6	1-B1	R11	1:R6	1-A7
*C40	1:L4	1-G1	C114	1:V10	2-A8	L23	1:K4	1-K2	R30	1:G9	1-M5
C41	1:L3	1-H1	C115	1:V9	2-A4	L24	1:D3	1-P2	R31	1:E7	1-N6
*C42	1:K4	1-J1	C116	1:V3	2-N1	L25	1:M3	1-F1	R32	1:D6	1-Q4
*C43	1:K3	1-J1	C117	1:W5	2-P8	L26	1:M8	1-F5	R33	1:D6	1-R4
C45	1:K4	1-J3	C118	1:V4	2-P8	L27	1:L9	1-G5	*R34	See Note	1-G5
C46	1:K7	1-J6	C119	1:U4	2-P7	L28	1:M9	1-G5	*R35	See Note	1-H5
*C47	1:K8	1-J5	C120	1:U4	2-P6	L31	1:M3	1-G2	R36	1:W9	2-C7
*C49	1:K8	1-J5	C121	1:V4	2-P5	L32	1:M2	1-G1	R37	1:W4	2-K0
C50	1:H8	1-K5	C122	1:V4	2-P5	L35	1:J7	1-J6	R38	1:W5	2-E8
CV51	1:H8	1-L5	C123	1:T5	2-Q7	L36	1:J6	1-J6	R42	1:V5	2-F8
*C52	1:J8	1-K5	C124	1:U5	2-Q7	L37	1:J5	1-J3	RV43	1:V1	2-G6
C54	1:K6	1-K3	C125	1:T5	2-R8	L38	1:J4	1-J2	R44	1:U6	2-G6
C55	1:K6	1-K3	C126	1:U3	2-N6	L39	1:H6	1-L4	R47	1:W5	2-F8
C56	1:H4	1-L2	C127	1:U3	2-M7	L41	1:F9	1-N5	RV48	1:W1	2-F8
CV57	1:H3	1-L1	C128	1:V3	2-M4	*L42	1:D7	1-P4	R49	1:W10	2-B6
*C58	1:J3	1-K1	C129	1:U3	2-N5	L43	1:C7	1-Q4	R50	1:W8	2-C5
C60	1:E9	1-N5	C130	1:V10	2-C8	*L45	1:C8	1-P5	RV52	1:T1	2-F5
C61	1:F9	1-N5	C131	1:V9	2-C4	*L46	1:C9	1-Q5	R55	1:V6	2-D4
*C62	See Note	1-P5	D1	1:F6	1-M6	*L47	1:B8	1-Q5	R56	1:V6	2-E4
*C63	1:C9	1-P5	D2	1:E9	1-N5	L49	1:F6	1-M6	RV57	1:S1	2-E3
*C65	1:C9	1-Q5	D3	1:S3	2-B1	L51	1:K10	1-Q9	R58	1:U6	2-G5
*C66	1:B8	1-R5	D5	1:W9	2-C8	L52	1:C7	1-P4	R61	1:V8	2-E0
C67	See Note	1-P4	D6	1:U2	2-G6	PL1	1:J5	2-A2	R62	1:V8	2-D0
C68	1:D7	1-Q4	D10	1:W10	2-B5			2-A1	*RV63	1:V6	2-M2
C69	1:W6	2-G1	D11	1:W9	2-C5			2-A2	R64	1:U6	2-N2
*C70	1:D6	1-Q4	D13	1:T2	2-E2			2-A2	R67	1:W5	2-K2
C70A	See Note	2-J1	D17	1:V3	2-N1			2-A1	R68	1:U5	2-L2
C72	1:E6	1-L6			2-N1			2-A9	R69	1:V6	2-G1
C73	1:F6	1-L6	IC1	1:V6	2-E8			2-A6	RV69	1:V2	2-H1
C76	1:V10	2-B8			2-D5			2-A0	R70	1:V5	2-G1
C77	1:V10	2-B8			2-P2			2-A0	R72	1:J10	1-Q8
C78	1:U10	2-C7			2-L1			2-A1	R73	1:U5	2-L0
C80	1:U6	2-H8			2-G1			2-A1	RV74	1:W2	2-M0
C81	1:U2	2-F6	IC2	1:V8	2-D0			2-A0	R77	1:V6	2-P3
C84	1:V9	2-B4	IC3	1:U4	2-H8			2-A5	R78	1:U8	2-Q2

<u>Device</u>	<u>PCB</u>	<u>Circuit</u>	<u>Device</u>	<u>PCB</u>	<u>Circuit</u>	<u>Device</u>	<u>PCB</u>	<u>Circuit</u>	<u>Device</u>	<u>PCB</u>	<u>Circuit</u>
R80	1:U8	2-Q3									
R81	1:W5	2-D7									
R82	1:V5	2-D8									
R83	1:V6	2-C4									
R84	1:V6	2-C4									
R85	1:T6	2-E3									
R86	1:W3	2-G7									
R87	1:T3	2-J8									
R88	1:T4	2-H3									
R89	1:N10	1-E5									
R90	1:G1	1-M1									
R91	1:F1	1-N1									
R92	1:P10	1-D5									
R93	1:D1	1-P2									
R94	1:C1	1-Q2									
R95	1:S1	2-C3									
R96	1:U2	2-F5									
R97	1:U2	2-D6									
R98	1:U3	2-J9									
R99	1:T4	2-H4									
R100	1:U5	2-L2									
R101	1:W8	2-M2									
R102	1:U2	2-N8									
R103	1:U2	2-N6									
R104	1:U4	2-P7									
R105	1:U3	2-N7									
R106	1:U4	2-P7									
R107	1:U4	2-P6									
R108	1:W4	2-N8									
R109	1:V3	2-P9									
R110	1:U3	2-M5									
R111	1:U3	2-M4									
R112	1:U2	2-M4									
R113	1:U3	2-N4									
R115	1:V3	2-N5									
R116	1:V3	2-M5									
R117	1:V3	2-P5									
R118	1:V4	2-P4									
R119	1:U5	2-Q7									
R120	1:U5	2-Q8									
R121	1:T5	2-Q8									
R122	1:V5	2-M6									
R123	1:W7	2-M3									
R124	1:W7	2-M2									
SK1	1:R10	1-G7									

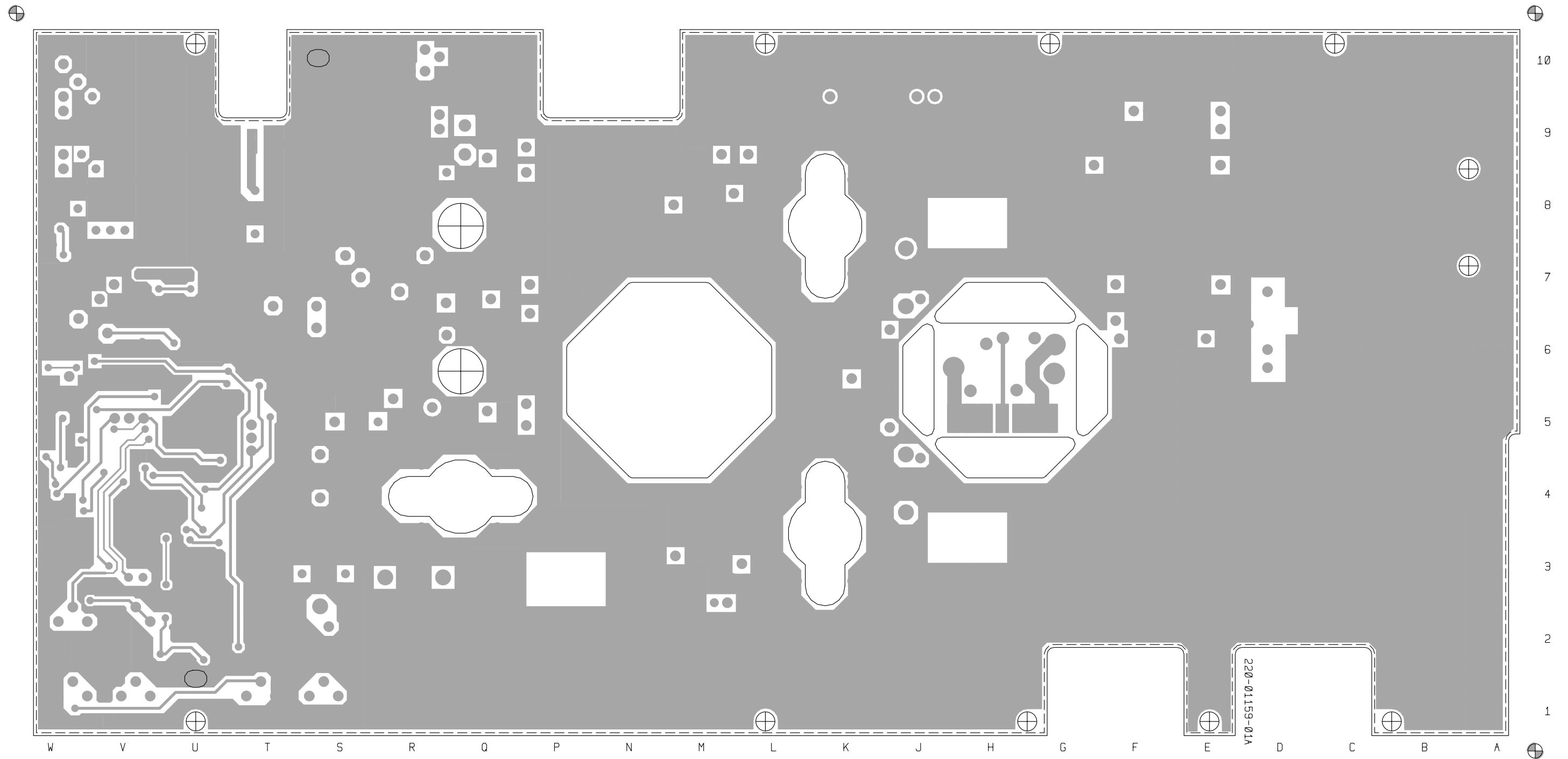
**Note:**

\*C62 & C67 are mounted on the Directional Coupler PCB (220-01152-00).

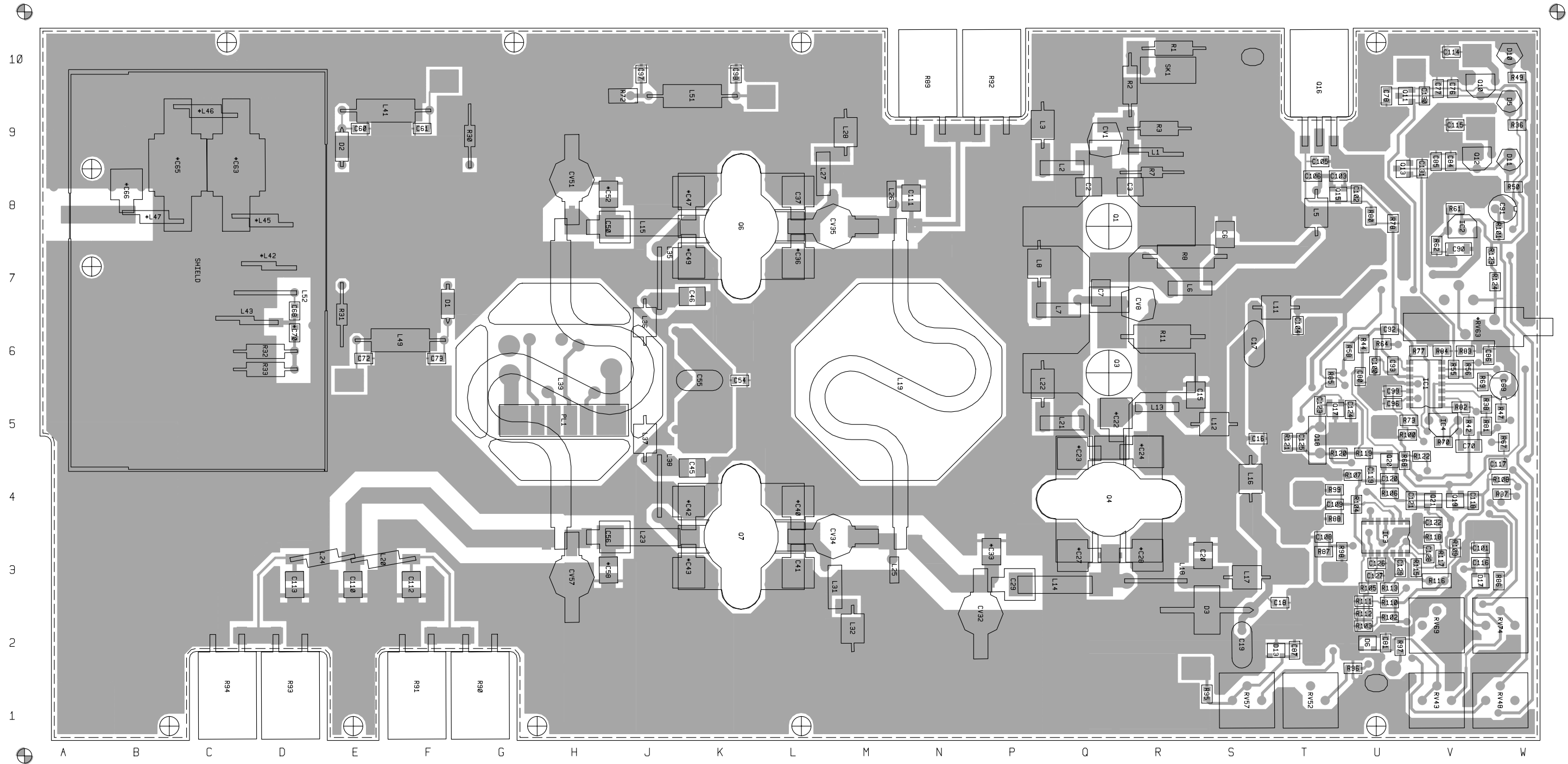
C70A with the grid references of:

**PCB** 1:V5 & **Circuit** 2-J1 is incorrectly shown in the artwork as C70.

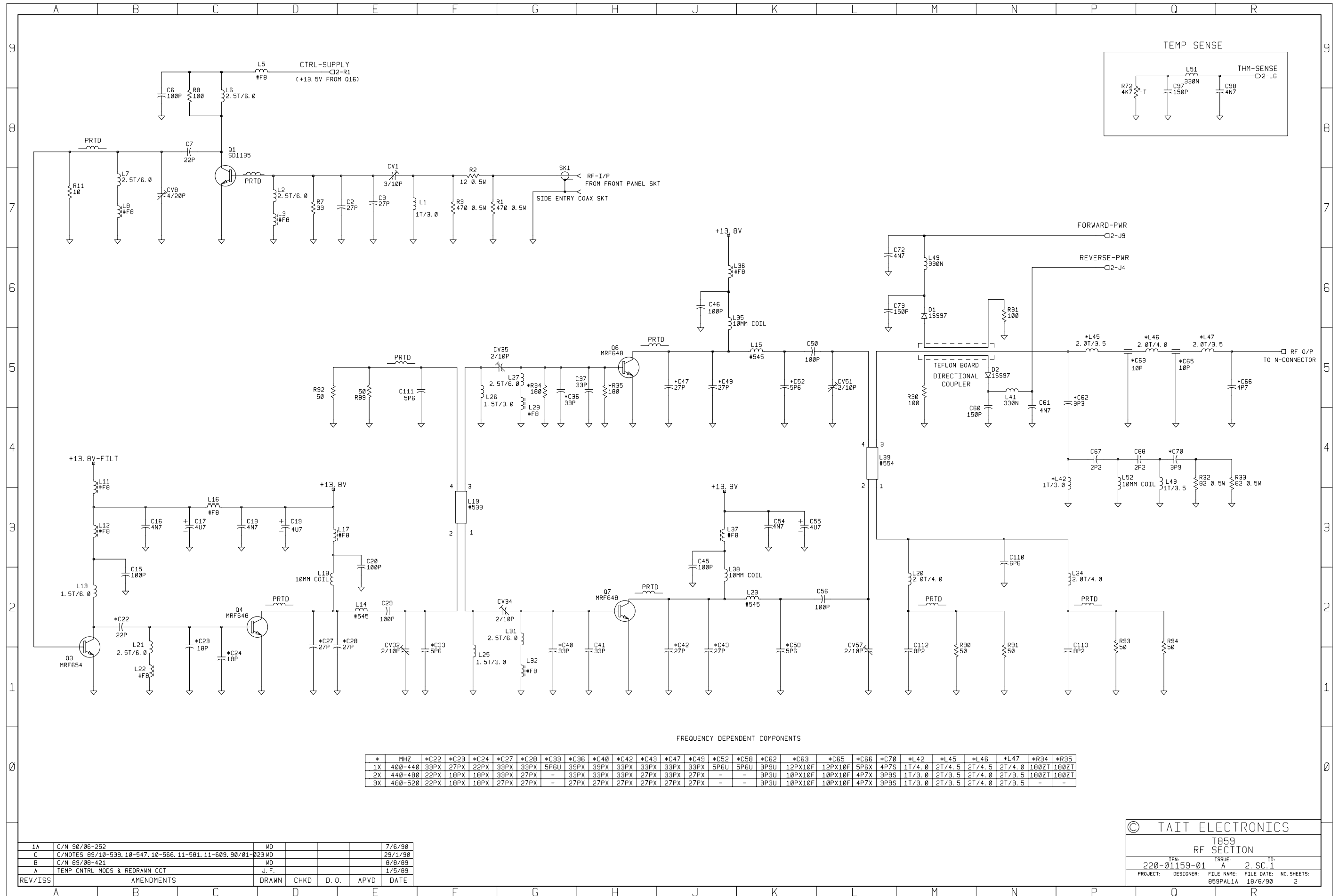
\*R34 & \*R35 are mounted across the base and emitter of Q6.



T859 PCB Layout  
Bottom Side  
220-01159-01



**T859 PCB Layout  
Top Side  
220-01159-01**



FREQUENCY DEPENDENT COMPONENTS

*	MHZ	*C22	*C23	*C24	*C27	*C28	*C33	*C36	*C40	*C42	*C43	*C47	*C49	*C52	*C58	*C62	*C63	*C65	*C66	*C70	*L42	*L45	*L46	*L47	*R34	*R35
1X	400-440	33PX	27PX	22PX	33PX	33PX	5P6U	39PX	33PX	33PX	33PX	33PX	33PX	5P6U	5P6U	3P9U	12PX10F	12PX10F	5P6X	4P7S	1T/4.0	2T/4.5	2T/4.5	2T/4.0	180ZT	180ZT
2X	440-480	22PX	18PX	18PX	33PX	27PX	-	33PX	33PX	33PX	27PX	33PX	27PX	-	-	3P3U	10PX10F	10PX10F	4P7X	3P9S	1T/3.0	2T/3.5	2T/4.0	2T/3.5	180ZT	180ZT
3X	480-520	22PX	18PX	18PX	27PX	27PX	-	27PX	27PX	27PX	27PX	27PX	27PX	-	-	3P3U	10PX10F	10PX10F	4P7X	3P9S	1T/3.0	2T/3.5	2T/4.0	2T/3.5	-	-

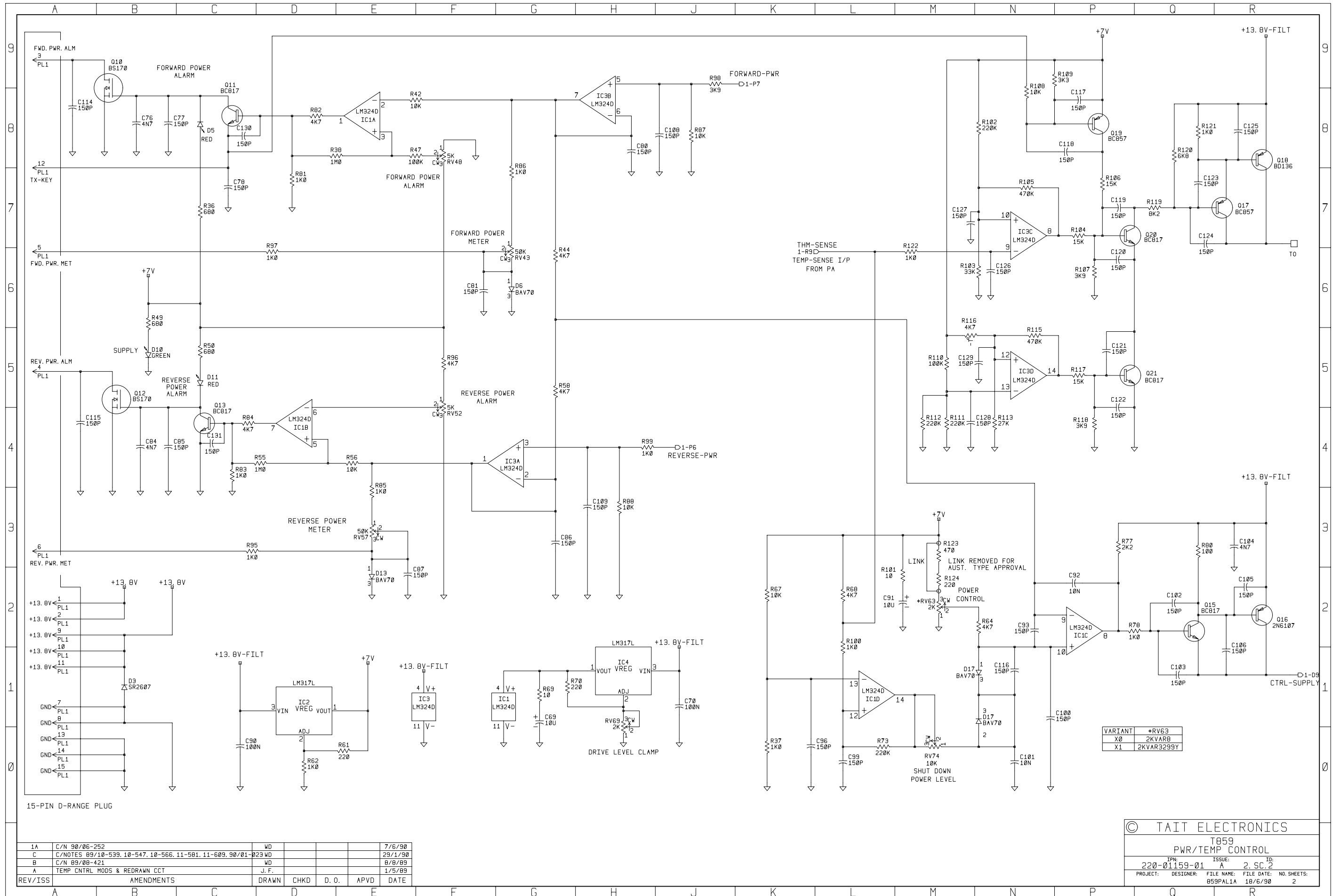
1A	C/N 90/06-252	WD		7/6/90		
C	C/NOTES 89/10-539, 10-547, 10-566, 11-581, 11-609, 90/01-223	WD		29/1/90		
B	C/N 89/08-421	WD		8/8/89		
A	TEMP CNTRL MODS & REDRAWN CCT	J. F.		1/5/89		
REV/ISS	AMENDMENTS	DRAWN	CHKD	D. O.	APVD	DATE

© TAIT ELECTRONICS

T859  
RF SECTION

ISSUE: 2. SC. 1

PROJECT: 220-01159-01  
DESIGNER: A  
FILE NAME: 859PAL1A  
FILE DATE: 18/6/90  
NO. SHEETS: 2



1A	C/N 90/06-252	WD			7/6/90
C	C/NOTES 89/10-539, 10-547, 10-566, 11-581, 11-609, 90/01-023	WD			29/1/90
B	C/N 89/08-421	WD			8/8/89
A	TEMP CNTRL MODS & REDRAWN CCT	J. F.			1/5/89
REV/ISS	AMENDMENTS	DRAWN	CHKD	D. O.	APVD DATE

© TAIT ELECTRONICS	
T859	
PWR/TEMP CONTROL	
IPN: 220-01159-01	ISSUE: A 2 SC. 2
PROJECT: DESIGNER: FILE NAME: FILE DATE: NO. SHEETS:	859PAL1A 18/6/90 2